



Reinforcement Training Package

ALL ARMS SEARCH COURSE (AASC)

Training Management Plan

Annex A

Exercise Scenario Booklet

CONTENTS





ROUTE SEARCH – PRACTICE 1

AIM

This exercise will provide an opportunity for the Search Team to conduct a complete route search task as a single team. The Search Comd, after receiving the scenario will have an opportunity to conduct a basic threat assessment and then produce a workable plan. The Team Comd and 2IC will deliver orders and conduct a complete search task. The Instructor should act as all agencies to enable effective questioning by the search team commander.

SITUATION - GENERAL

1. You are a UN contingent as part of the UN Mission in CARANA (UNMIC). The UNMIC forces have deployed to CARANA to provide security assistance to the Government of CARANA following the rise of an extremist anti-government militia known as the Combattants Indépendants du Sud Carana (CISC). Although extremist in its nature, CISC are a political movement seeking to gain popular support from the citizenry in order to overthrow the national government. CISC are a well armed militia but due to a lack of training and force structure, they have resorted to employing insurgent tactics against both national and UN security forces. Recently CISC started using IEDs. Many years of conflict in the region means there is a vast amount of explosive remnants of war, which can be easily adapted to make IEDs. The region also lacks regulations and enforcements in its mining and agriculture sector.
2. You are currently based at the Sand Pit Patrol Base. You are a Search Team within a Infantry Company. A new Patrol Base has been recently established in order to provide a more robust security presence around the nearby Amani Village. The local Battalion Commander has tasked you to conduct a Route search to clear a route to the newly established Patrol Base.

SITUATION - DETAIL

3. The major roads around the Amani village are used routinely by the local villagers.
4. UNMIC have a routine presence in the area, routinely carrying out reassurance patrols. The establishment of the new patrol base has seen an increase in the number of UNMIC vehicles moving along the main road connecting the Sandpit Patrol Base and the new patrol base. 5 days ago an UNMIC vehicle was targeted with small arms fire leading to 1 fatality. UNMIC forces have not patrolled the route since this incident and the local villagers have also stopped using the route. Following the incident, the Battalion Commander is keen to re-establish routine patrols but the lack of presence may have given the CISC forces an opportunity to emplace IEDs. You have been tasked to conduct a search of the route in order to enable patrol to be re-established.

MISSION

5. You are to CLEAR the route (identified on Map) NLT 1700 tomorrow in order to enable freedom of movement of UNMIC forces.

PLANNING INFORMATION

6. There has been 2 previous IED strikes that were successful in the nearby town, but none yet in the Amani village. See attached image

7. You have the following:

- a. You and your team (IOT conduct the search), additional teams may be called forward if justified.
- b. 1 x Infantry Platoon to act as cordon troop. Remaining Platoons will man the Sandpit PB/QRF.
- c. IEDD Team at 1 hr response time.

8. The instructor will act as all agencies as required. Questions, requests and points of clarification are to be addressed to the instructor who issued the planning pack.

REQUIREMENTS

9. You are to:

- a. As per your mission statement.\
- b. Brief the instructor on your threat summary and plan (as per the back brief format). This is to include;
 - i. Threat assessment (in detail) and why / how you came to this assessment.
 - ii. Plan from start to finish showing breakdown of areas and priorities, likely hide locations VPs, what you expect to find and where.
 - iii. Agencies required / requested.
 - iv. Cordon plan and threat to cordon.
 - v. Timings.
 - vi. Actions on find.
- c. Deliver a set of orders to your Search Team NLT 0800 tomorrow.
- d. Carry out a complete search of the route.

Ground in General



Ground in Detail







Recent IED Incidents



3 Weeks Ago. Command wire IED targeting a CARANA police landcruiser. This route was frequented by both police forces and civilians. The device was assessed to be a Artillery shell (likely 155mm) buried in the centre of the road at a slow down point in the road. The strike was captured on video and later published by the CISC as propaganda.

1 Week Ago. Victim operated IED which was found by a UNMIC patrol. This route was frequented by both UNMIC patrols but rarely used by civilians. The device was a high metal content pressure place stacked on top of 105mm artillery shell placed in the wheel rut of the road. The device was identified by the vehicle commander due to an unusual disturbance in the ground.

Instructor Guidance for Back Brief (not to be issued to student):

The instructor should provide a time and place for the back brief.

The student should ask questions to enable them to establish the likely type of IEDs and potential VPs to search. The guidance below should be used in order to provide the students with answers.

Intent	Capability	Ground
The search advisor should establish the intent from the text in the scenario. They should identify that CISC is targeting UNMIC forces and not civilians. The deduction here is that command IED is more likely but the reduced civilian activity could indicate VO IED.	The search advisor should identify that the CISC have both a small arms and IED capability as both have been used successfully recently. The student should also identify that the CISC is generally tending towards the use of UXO/AXO in the construction of their IEDs with either simple stacked VO or command wire IED.	The route has a number of possible VPs and VAs. The search advisor should discount possible VPs within the limit of visibility of the FOBs.

Following the back brief the Search Advisor should prepare order for the Search Team to be delivered the following morning prior to conducting the search.

Following the back brief the instructors must emplace 1 or 2 devices. These devices must fit the scenario and should be complete. The devices should be emplaced realistically and in VPs that would enable their effective use. The student back brief should not dictate the location and type of device, it must match the scenario.

ROUTE SEARCH – PRACTICE 2 –(SINGLE-TEAM SEARCH)

AIM

This exercise will provide an opportunity for the Search Team to conduct a complete route search task as a single team. The Search Comd, after receiving the scenario will have an opportunity to conduct a basic threat assessment and then produce a workable plan. The Team Comd and 2IC will deliver orders and conduct a complete search task. The Instructor should act as all agencies to enable effective questioning by the search team commander.

SITUATION - GENERAL

1. You are a UN contingent as part of the UN Mission in CARANA (UNMIC). The UNMIC forces have deployed to CARANA to provide security assistance to the Government of CARANA following the rise of an extremist anti-government militia known as the Combattants Indépendants du Sud Carana (CISC). Although extremist in its nature, CISC are a political movement seeking to gain popular support from the citizenry in order to over throw the national government. CISC are a well armed militia but due to a lack of training and force structure, they have resorted to employing insurgent tactics against both national and UN security forces. Recently CISC started using IEDs. Many years of conflict in the region means there is a vast amount of explosive remnants of war, which can be easily adapted to make IEDs. The region also lacks regulations and enforcements in its mining and agriculture sector.
2. You are currently based at the Sand Pit Patrol Base. You are a Search Team within a Infantry Company. Your Company is tasked with supporting the local security force (CARANA Police Force) in providing security to the local population within the village of AMANI. Following a series of recent IED strikes on the local police force, they have been confined to their police post as they have no CIED capability. The UN commander has tasked your Unit to clear the routes in the local area of IEDs in order to enable the local police to re-establish a security presence.

SITUATION - DETAIL

3. The routes in the local area were frequently used by both police and local civilians until last week when two IED strikes targeting the police killed 2 police officers and a further 3 civilians.
4. There is believed to be a CISC cell operating in the area who are seeking to deny security force freedom of movement in order to establish themselves as the dominant force.
5. Due to tribal and religious differences, the CISC are not popular with the local population.

MISSION

6. You are to CLEAR the route (identified on Map) NLT (1800 on same day) in order to enable CARANA Police to reestablish a security presence.

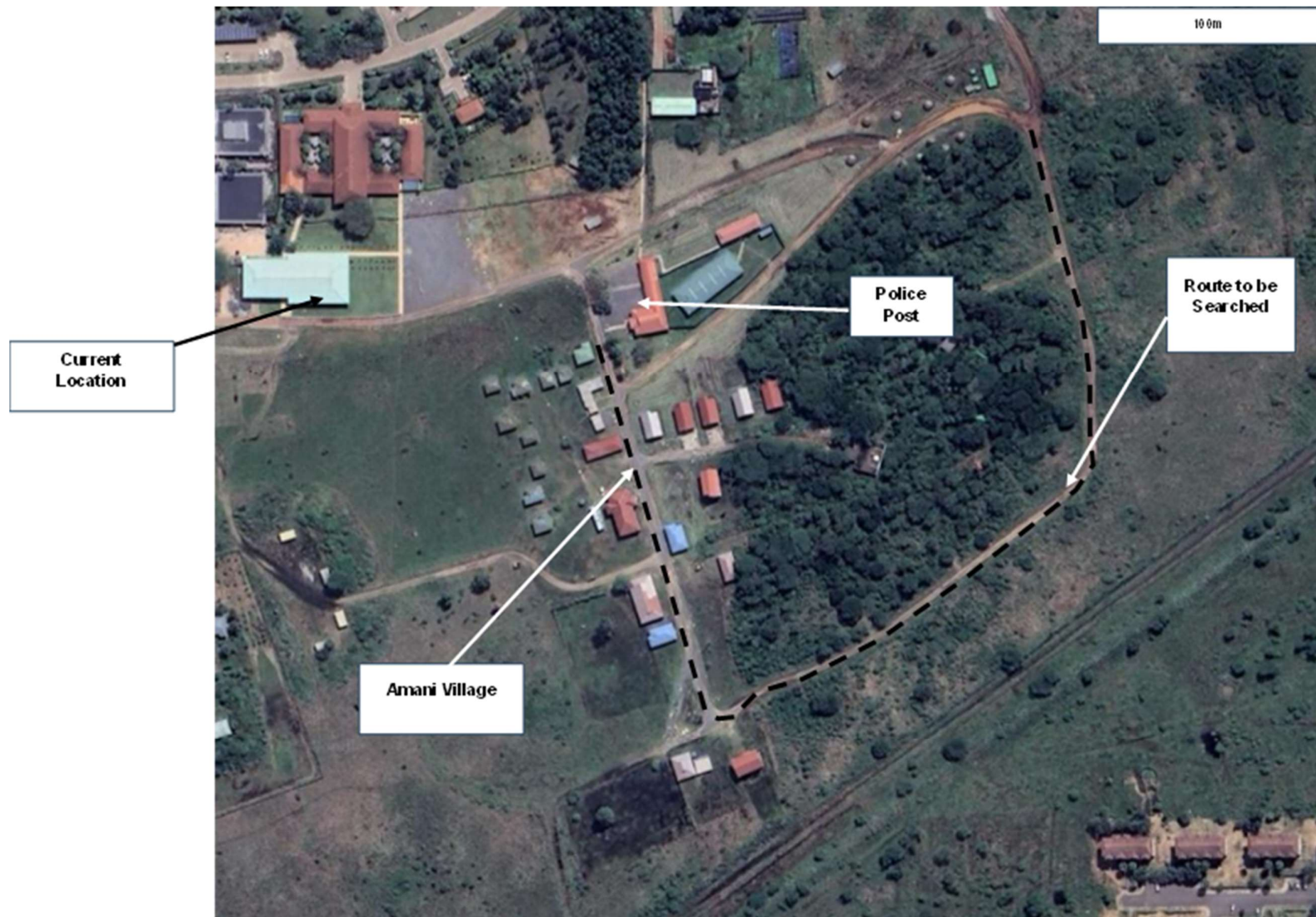
PLANNING INFORMATION

7. There has been a number of recent IED incidents.
8. You have the following:
 - a. You have 2 search teams available to complete the task.
 - b. A detachment of local police (approx. 10 persons) who may provide security as a cordon or vehicle checkpoints.
 - c. IEDD Team at 20 minute response time.
9. The instructor will act as all agencies as required. Questions, requests and points of clarification are to be addressed to the instructor who issued the planning pack.

REQUIREMENTS

10. As per your mission statement you are to:
 - a. Brief the instructor on your threat summary and plan (as per the back brief format). This is to include;
 - (1)Threat assessment (in detail) and why / how you came to this assessment.
 - (2)Plan from start to finish showing breakdown of areas and priorities, likely hide locations VPs, what you expect to find and where.
 - (3)Agencies required / requested.
 - (4)Cordon plan and threat to cordon.
 - (5)Timings.
 - (6)Actions on find.
 - b. Deliver a set of orders to your Search Team NLT 0800 tomorrow.
 - c. Carry out a complete search of the route.

Ground in General



Ground in Detail





Section of Road
continues to be used by
local villagers and
observed by police from
police post.

50m



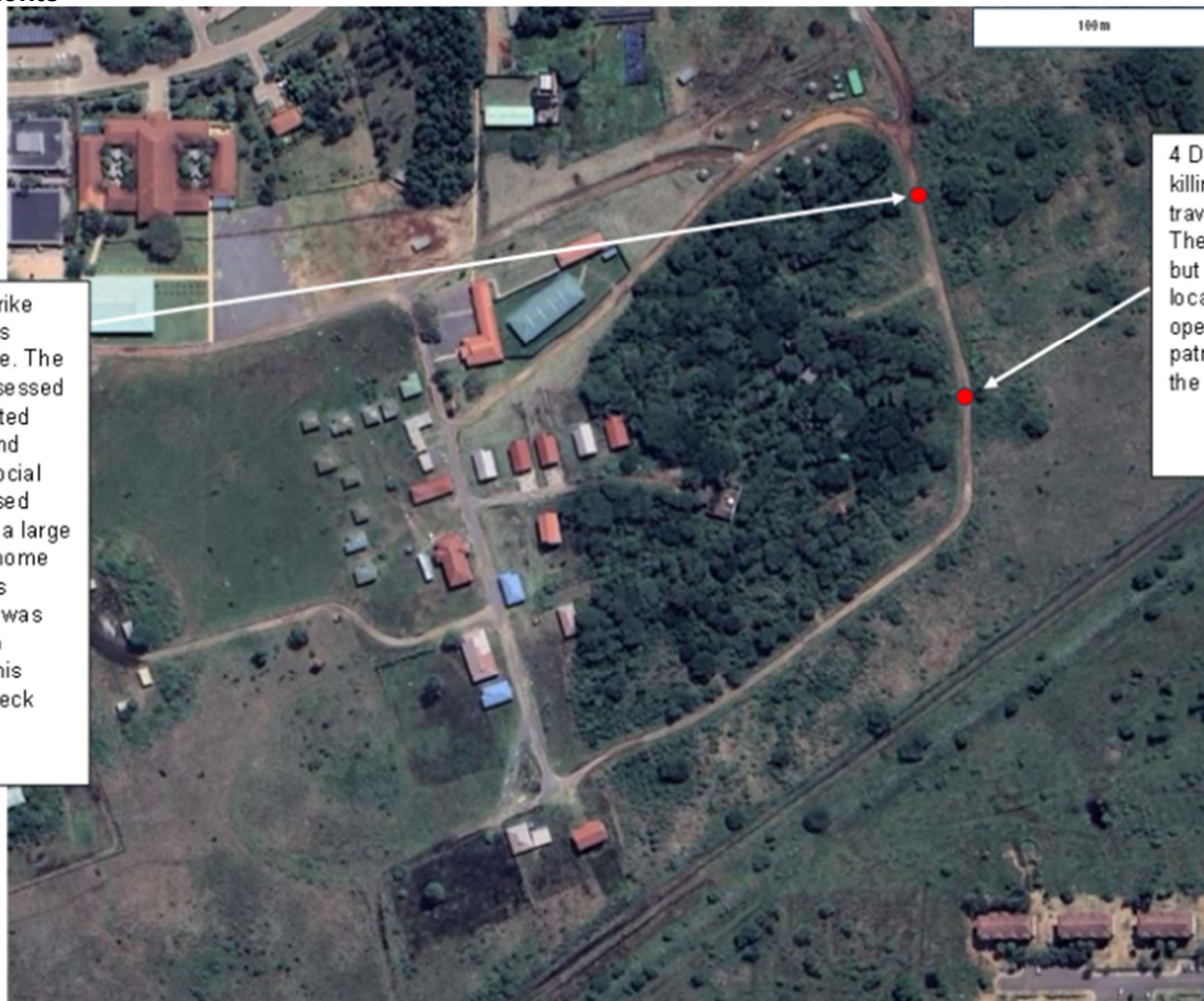


50m

Recent IED Incidents

5 Days Ago. IED Strike killed 3 local civilians travelling in a vehicle. The device type was assessed to be a victim operated IED. From videos and photos shared on social media it was assessed that the device was a large device, most likely home made explosive. It is believed the device was targeting police who routinely travel on this road to establish check points.

4 Days Ago. IED Strike killing 2 police officers travelling in a police vehicle. The device type is unknown but assessed based on the location to be a victim operated IED. No further patrols have taken place on the route since this incident.



Instructor Guidance for Back Brief (not to be issued to student):

The instructor should provide a time and place for the back brief.

The student should ask questions to enable them to establish the likely type of IEDs and potential VPs to search. The guidance below should be used in order to provide the students with answers.

Intent	Capability	Ground
The search advisor should establish the intent from the text in the scenario. They should identify that CISC is targeting local security forces in order to deny them freedom of movement and establish themselves as a dominant force. The Search Advisor should also determine that CISC are intending to do this by force and do not have significant regard for the civilian population. The deduction here is that VO IED is more likely.	The search advisor should identify that the CISC have an IED capability and that they have demonstrated the employment of VO IED.	<p>The route has a number of possible VPs and VAs. Previous attack sites should be classed as VP.</p> <p>The search advisor should discount possible VPs within the limit of visibility of the police station.</p>

Following the back brief the Search Advisor should prepare order for the Search Team to be delivered the following morning prior to conducting the search.

Following the back brief the instructors must emplace 1 or 2 devices. These devices must fit the scenario and should be complete. The devices should be emplaced realistically and in VPs that would enable their effective use. The student back brief should not dictate the location and type of device, it must match the scenario.

ROUTE SEARCH – TEST 1

AIM

This exercise will be the test scenario for assessment of the Search Advisor and the Search Team. The Search Advisor will be required to conduct a threat assessment, followed by the delivery of orders including a threat summary. The team will be required to conduct ROC drills and deploy to the area to complete a search under test conditions.

SITUATION – GENERAL

1. You are a UN contingent as part of the UN Mission in CARANA (UNMIC). The UNMIC deployed 18 months ago. The UNMIC forces have deployed to CARANA to provide security assistance to the Government of CARANA following the rise of an extremist anti-government militia known as the Combattants Indépendants du Sud Carana (CISC). Although extremist in its nature, CISC are a political movement seeking to gain popular support from the citizenry in order to overthrow the national government. CISC are a well armed militia but due to a lack of training and force structure, they have resorted to employing insurgent tactics against both national and UN security forces. The security situation deteriorated significantly in the early phases of UNMIC deployment requiring larger troop deployment and a mandate change from robust peacekeeping to Peace Enforcement. This granted the UNMIC to use any means necessary to implement the mandate. Early in the operation CISC started using IEDs. Which were initially simple VO style IEDs relying on UXO as main charges which were readily available from many years of conflict. The Mandate change allowed aggressive C-IED operations which were able to target the recovery of UXO/AXO reducing the insurgent access to these materials. The on-going lack of regulations and enforcements in its agriculture sector has meant the insurgents have transitioned to employing more HME. Furthermore, as troops become increasingly targeted by IEDs they began to adapt their TTPs forcing the CISC to employ more complex IEDs. Furthermore the increased targeting of insurgent training camps have forced the insurgents into taking more precautions by hiding amongst the population in larger urban areas.

SITUATION - DETAIL

2. You are currently based at the UNMIC Sector HQ based in Main Operating Base (MOB) EMBAKASI.. You are the Search Advisor for the sector HQ. Recently there has been a increase in the number of attacks on the HQ emanating from the nearby urban area of SOWETO. In response the Sector Commander directed the construction of a Patrol Base along Alternative Supply Route (ASR) ZEEBRA in order to provide a security screen. During the construction of the PB the recce force and the logistics convoy was targeted. The logistic convoy remain at the construction site as it has been

assessed that there may be further IEDs on the route. You have been tasked to conduct a threat assessment of the route and to clear the route in order to enable the logistic convoy to return to MOB and enable the construction to continue.

3. The CISC have a strong presence in the easter part of SOWETO where they have popular support. Generally they operate at night, preferring to remain in the towns during the day to hide amongst the community. Recently, the CISC has been able to purchase small civilian FPV drones which they have employed in the sector as a recce platform. They have yet to be able to weaponize the drones.

4. The local towns economy is predominantly light industry and mining meaning there is strong market for electrical components as well as commercial and agricultural chemicals.

MISSION

5. You are to conduct a threat assessment for your route and subsequently plan and conduct a Route Search (as identified).

PLANNING INFORMATION

6. There has been a number of recent IED incidents. See attached.

7. You have the following:\

- a. 1 Search Team. No other teams are available to you.
- b. 1 x Infantry Coy who can secure Main Supply Route RHINO ahead of your task if required.
- c. Recent imagery.
- d. 1 x light IEDD team (2 pax) who will deploy with your team.
- e. You have 1 x UN 4x4 vehicle

8. The instructor will act as all agencies as required. Questions, requests and points of clarification are to be addressed to the instructor who issued the planning pack.

REQUIREMENTS

9. As per your mission statement you are to:

- a. Brief the instructor on your threat assessment and plan (as per the back brief format). This is to include;
 - (1). Threat assessment (in detail) and why / how you came to this assessment.

- (2). Plan from start to finish showing start and finish of route, insertion point (and method), SSP, ICP, isolation routes, crossovers, VPs, what you expect to find and where.
- (3). Agencies required / requested.
- (4). Cordon plan and threat to cordon
- (5). Timings
- (6). Actions on find.
- b. Deliver Mission Orders to your Search Team
- c. Conduct a route search.

Note: This is a tactical exercise. All aspects of deploying and conducting the search need to be planned including the road move and return to base. You will not return to camp for tea/lunch. You need to plan for this and deploy with rations and conduct administrative breaks in a tactical manner.

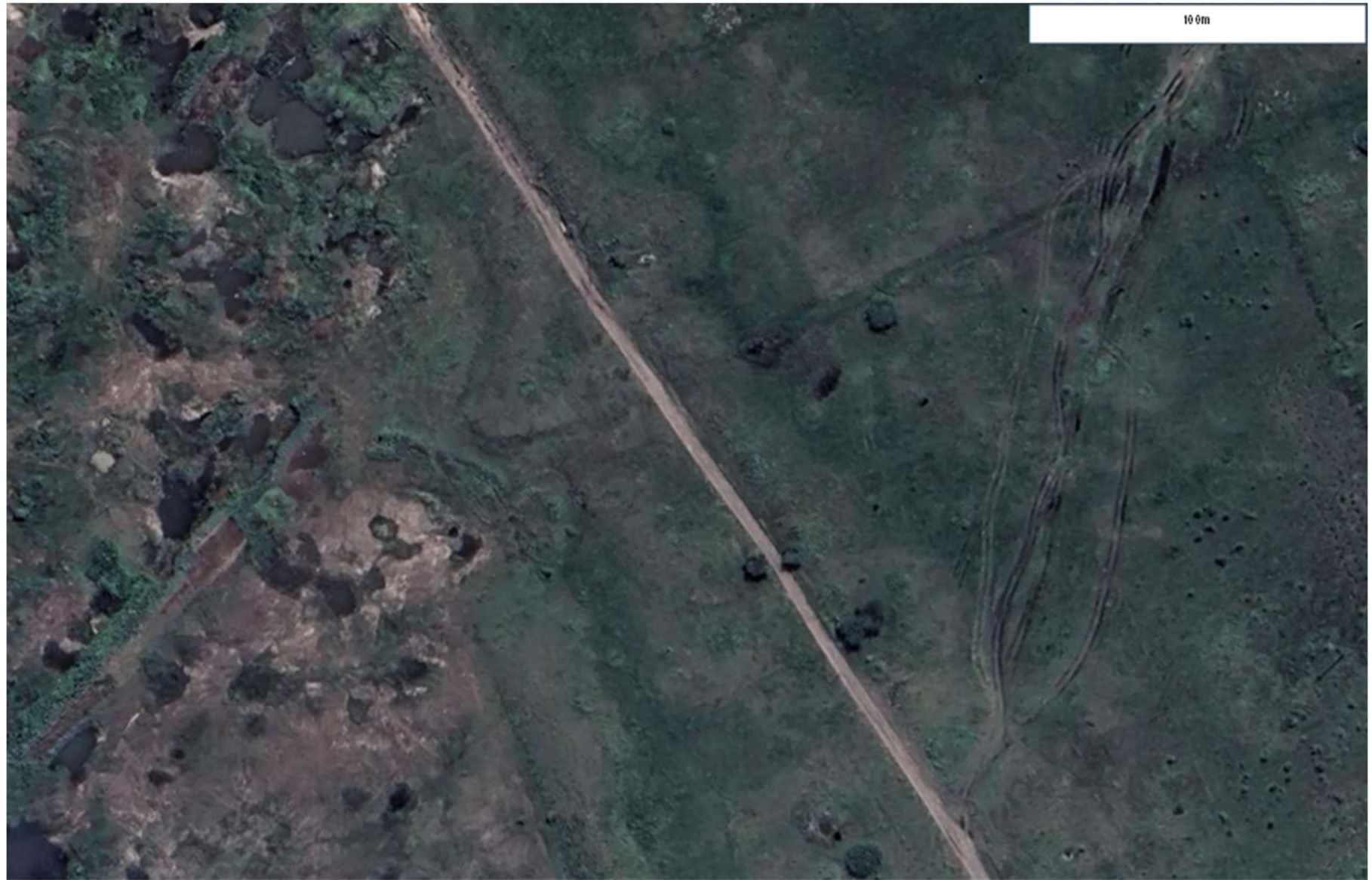
Ground in General



Ground In Detail







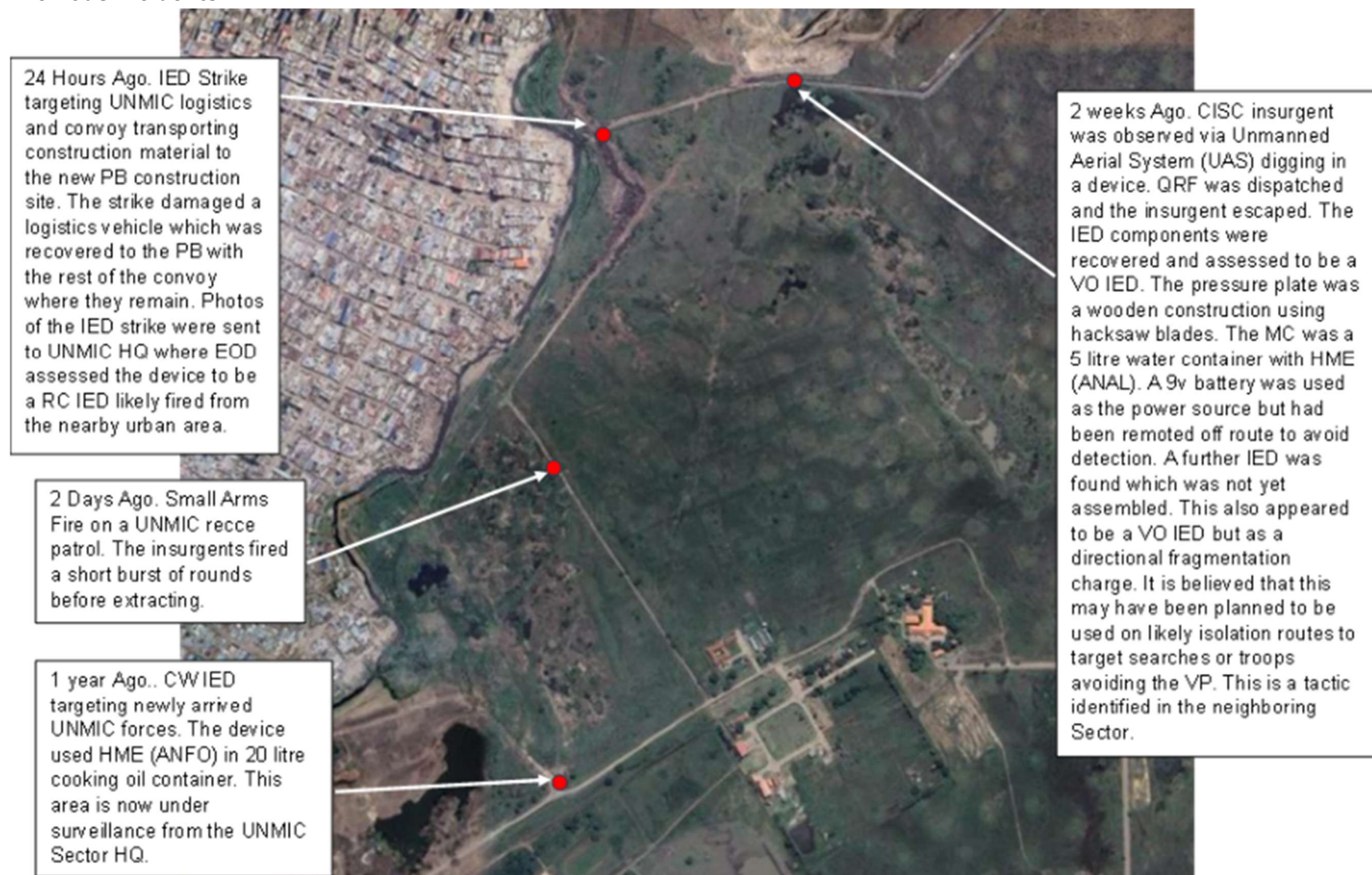




Recent photo of ASR ZEEBRA from MSR RHINO



Previous Incidents



Instructor Guidance for Back Brief (not to be issued to student):

The instructor should provide a time and place for the back brief.

The student should ask questions to enable them to establish the likely type of IEDs and potential VPs to search. The guidance below should be used in order to provide the students with answers.

Intent	Capability	Ground
The search advisor should establish the intent from the text in the scenario. They should identify that CISC is targeting UNMIC forces in order to deny them freedom of movement to enable further attacks on MOB EMBAKASI. The Search Advisor should also determine that CISC have popular support with locals and therefore will not look to harm civilians.	Based on the historic trends the CISC have the following: <ul style="list-style-type: none">• Small Arms/shoot capability.• Good reconnaissance through FPV drone.• Command IED. Likely to possess both CW and RC.• VO IED which can target both dismounts and search teams. The devices are likely to remote the batteries to avoid detection.• Likely MC is HME or commercial• Containers are likely to plastic water or cooking oil containers.	The route has a number of possible VPs and VAs. See attached

Following the back brief the Search Advisor should prepare order for the Search Team to be delivered the following morning prior to conducting the search.

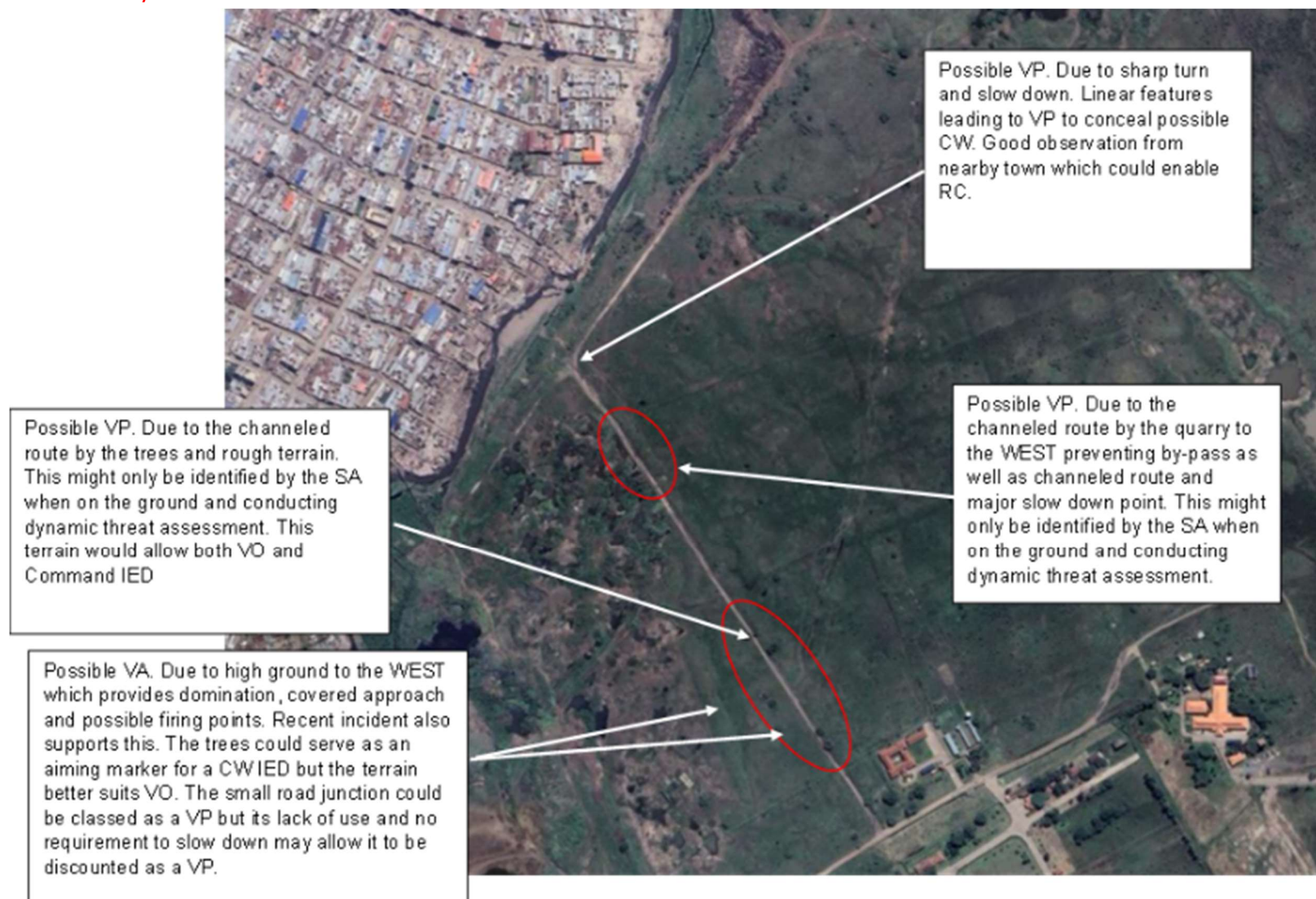
Following the back brief the instructors must emplace 2 devices. These devices must fit the scenario and should be complete. The devices should be emplaced realistically and in VPs that would enable their effective use. The student back

brief should not dictate the location and type of device, it must match the scenario.

Device 1 – VO IED using hacksaw blade style pressure plate, HME containers and a power source remoted off. At obvious VP instructor may place a secondary VO IED (directional fragmentation) to target the isolation party.

Device 2. RC IED with receiver placed off route and in line of sight of urban area.

POSSIBLE VA/VP - NOT TO BE ISSUED TO STUDENT



ROUTE SEARCH – TEST 2

AIM

This exercise will be a test scenario for assessment of the Search Advisor and the Search Team. The Search Advisor will be required to conduct a threat assessment, followed by the delivery of orders including a threat summary. The team will be required to conduct ROC drills and deploy to the area to complete a search under test conditions. This scenario will test the Search Advisors ability to assess the route and create a plan where resources (ie Search Teams) are not sufficient for the demand.

SITUATION – GENERAL

1. You are a UN contingent as part of the UN Mission in CARANA (UNMIC). The UNMIC deployed 18 months ago. The UNMIC forces have deployed to CARANA to provide security assistance to the Government of CARANA following the rise of an extremist anti-government militia known as the Combattants Indépendants du Sud Carana (CISC). Although extremist in its nature, CISC are a political movement seeking to gain popular support from the citizenry in order to overthrow the national government. CISC are a well armed militia but due to a lack of training and force structure, they have resorted to employing insurgent tactics against both national and UN security forces. The security situation deteriorated significantly in the early phases of UNMIC deployment requiring larger troop deployment and a mandate change from robust peacekeeping to Peace Enforcement. This granted the UNMIC to use any means necessary to implement the mandate. Early in the operation CISC started using IEDs. Which were initially simple VO style IEDs relying on UXO as main charges which were readily available from many years of conflict. The Mandate change allowed aggressive C-IED operations which were able to target the recovery of UXO/AXO reducing the insurgent access to these materials. The on-going lack of regulations and enforcements in its agriculture sector has meant the insurgents have transitioned to employing more HME. Furthermore, as troops become increasingly targeted by IEDs they began to adapt their TTPs forcing the CISC to employ more complex IEDs. Furthermore the increased targeting of insurgent training camps have forced the insurgents into taking more precautions by hiding amongst the population in larger urban areas.

SITUATION - DETAIL

2. You are currently based at the UNMIC Sector HQ based in Main Operating Base (MOB) EMBAKASI.. You are the Search Advisor for the sector HQ. Recently there has been a increase in the number of attacks on the HQ emanating from the nearby urban area of SOWETO. In response the Sector Commander has stepped up the number of patrols along Alternative Supply Route (ASR) ZEBRA in order to provide a security

screen. This has led to routine engagements between UNMIC and CISC insurgents meaning the route is no longer safe for civilians.

3. The CISC have a strong presence in the easter part of SOWETO where they have popular support.

4. There is a nearby Masai village on ancestral land which generally sided with UNMIC forces who were granted access on the land to construct MOB Embakasi. This has resulted in the community being targeted by CISC. Recently this has included the targeting of the Masai community with IEDs on their only remaining access route to MSR RHINO. As such the community has been confined to their village without access to fresh food and water resulting in severe malnutrition. In response, UNMIC has been tasked to clear the route to the village to enable a humanitarian aid convoy to deliver vital supplies and re-connect the villagers with MSR RHINO.

5. The Aid convoy is due to arrive tomorrow at 1700 and must deliver the aid and leave the village by last light 1845. It will take approximately 1 hour to offload the aid.

MISSION

6. You are to conduct a threat assessment for your route and subsequently plan and conduct a Route Search (as identified).

PLANNING INFORMATION

7. There has been a number of recent IED incidents. See attached.

8. You have the following:\

- a. 1 Search Team. No other teams are available to you.
- b. 1 x Infantry Coy who can secure Main Supply Route RHINO ahead of your task if required.
- c. Recent imagery.
- d. 1 x light IEDD team (2 pax) who will deploy with your team.

9. The instructor will act as all agencies as required. Questions, requests and points of clarification are to be addressed to the instructor who issued the planning pack.

10. As well as the imagery provided, you are encouraged to employ open source maps such as Google Maps to assist your planning

REQUIREMENTS

11. As per your mission statement you are to:

- a. Brief the instructor on your threat assessment and plan (as per the back brief format). This is to include;
 - (1). Threat assessment (in detail) and why / how you came to this assessment.

- (2). Plan from start to finish showing start and finish of route, insertion point (and method), SSP, ICP, isolation routes, crossovers, VPs, what you expect to find and where.
 - (3). Agencies required / requested.
 - (4). Cordon plan and threat to cordon
 - (5). Timings
 - (6). Actions on find.
- b. Deliver Mission Orders to your Search Team
 - c. Conduct a route search.

Search Advisor Guidance. The proposed route from MSR RHINO to the village is approx. 1.7km. A complete search of this route is not achievable within your resource and time constraints. You will need to assess the route and identify the key areas which need to be searched in order to achieve your mission.

Note: This is a tactical exercise. All aspects of deploying and conducting the search need to be planned including the road move and return to base. You will not return to camp for tea/lunch. You need to plan for this and deploy with rations and conduct administrative breaks in a tactical manner.

Ground In General







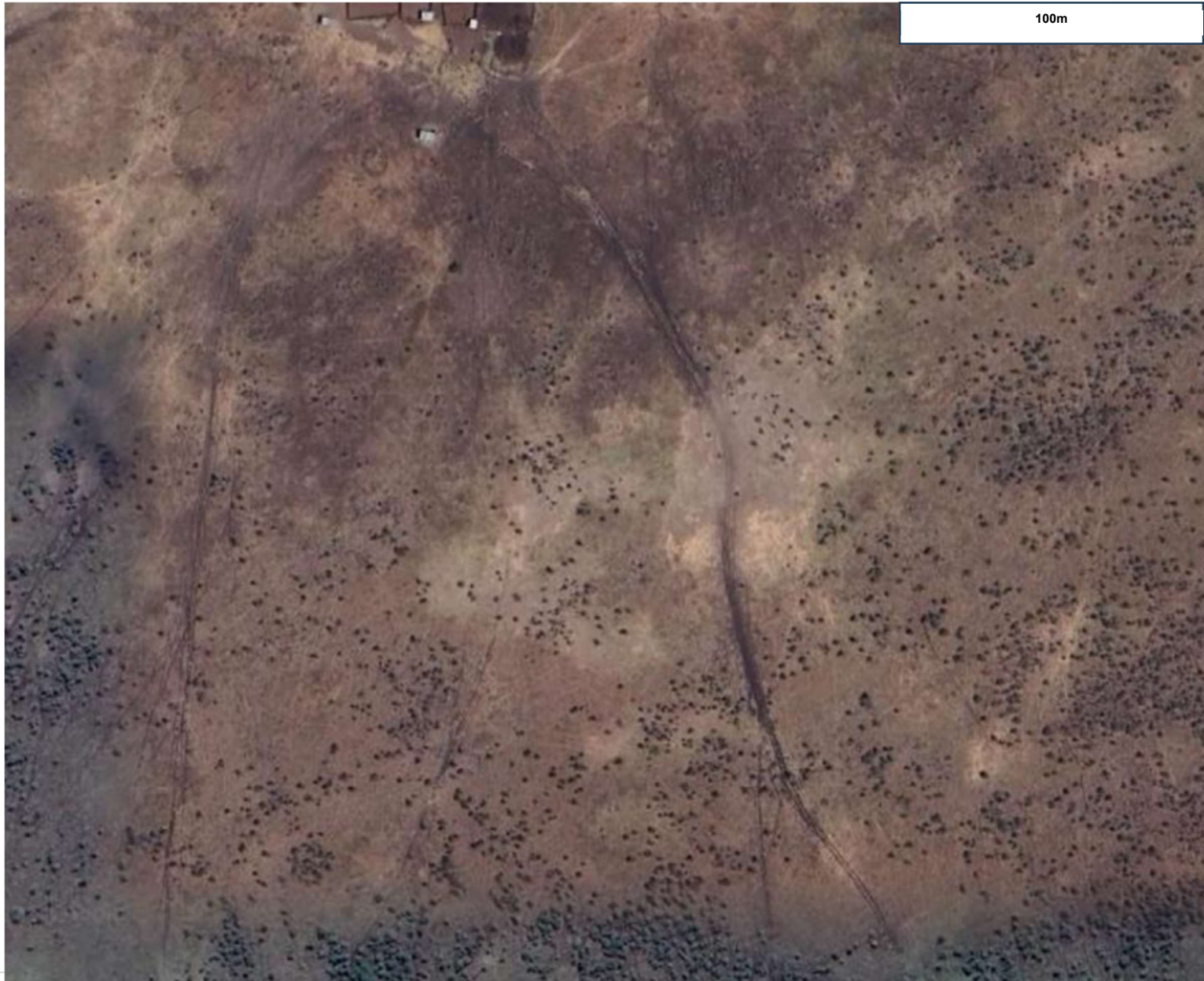






100m





Recent photo taken of proposed route from MSR RHINO facing North East



Recent Incidents

2 x VO IED. 1 x strike 3 weeks ago 1 x find last week.. Simple stacked IEDs using high metal content PP and HME in 20 litre yellow coking oil container targeting

Last month. CW IED. Strike followed up with small arms fire. Large blast likely HME, damaging UNMIC APC.

2 Months ago. Assessed VO IED strike. Partial explosion severely injured the driver and passenger. Video circulating on social media show MC was in the wheel rut and the debris of container suggest a yellow cooking oil container. Estimated to be 5 litres.

3 months ago. Assessed VO IED. Killing a herder from the village.

2 weeks ago. Assessed VO IED struck civilian vehicle (probox) travelling to the village killing all occupants. Photos of the crater indicate a simple stacked IED in the wheel rut. Assessed size of charge to be 5KG HME.

3 days ago. CW IED. Device was found, due to basic CIED drill identifying CW. The patrol was then attacked while waiting for IEDD.

Instructor Guidance for Back Brief (not to be issued to student):

The instructor should provide a time and place for the back brief.

The student should ask questions to enable them to establish the likely type of IEDs and potential VPs to search. The guidance below should be used in order to provide the students with answers.

Intent	Capability	Ground
The search advisor should establish the intent from the text in the scenario. They should identify that CISC is targeting civilians in order to harass/kill the local community due to their affiliation with UNMIC. UNMIC remain the primary target of their attacks.	Based on the historic trends the CISC have the following: <ul style="list-style-type: none">• Small Arms/shoot capability.• The posses a command wire IED Capability but have not demonstrated the use of RC.• VO IED. Predominant IED threat. This is the most likely threat.• Likely MC is HME, they have not demonstrated use of Mil(UXO/AXO) recently. The majority of main charges are small (5KG).• Containers are likely to plastic water or cooking oil containers.	The route has a number of possible VPs and VAs. See

Following the back brief the Search Advisor should prepare order for the Search Team to be delivered the following morning prior to conducting the search.

Following the back brief the instructors must emplace 2 devices. These devices must fit the scenario and should be complete. The devices should be emplaced realistically and in VPs that would enable their effective use. The student back brief should not dictate the location and type of device, it must match the scenario.

Device 1 – VO IED using hacksaw blade style pressure plate, HME containers and a power source remoted off. At obvious VP instructor may place a secondard VO IED (directional fragmentation) to target the isolation party.

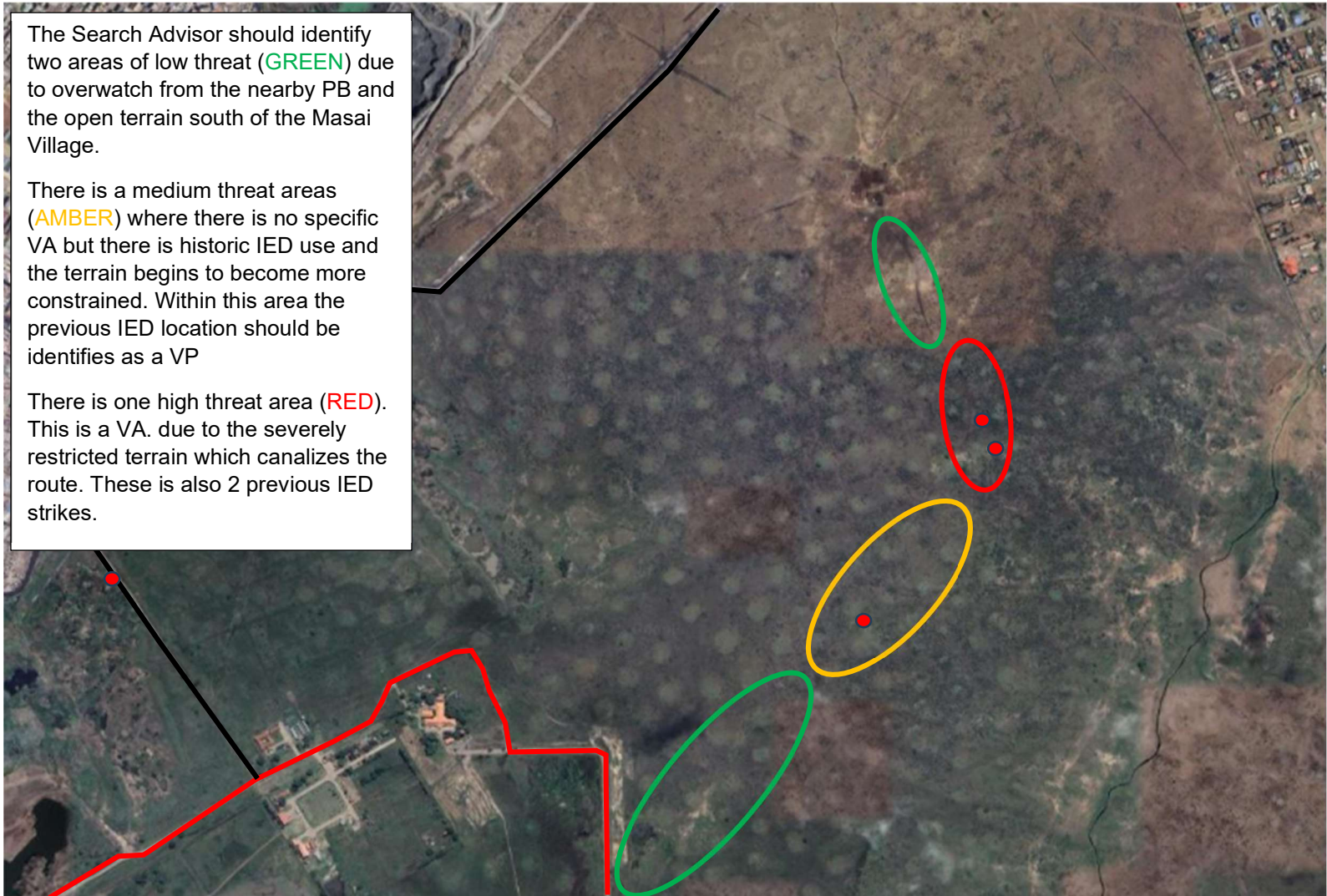
Device 2. RC IED with receiver placed off route and in line of sight of urban area.

Possible VA/VPs – Not to be issued to students

The Search Advisor should identify two areas of low threat (**GREEN**) due to overwatch from the nearby PB and the open terrain south of the Masai Village.

There is a medium threat areas (**AMBER**) where there is no specific VA but there is historic IED use and the terrain begins to become more constrained. Within this area the previous IED location should be identifies as a VP

There is one high threat area (**RED**). This is a VA. due to the severely restricted terrain which canalizes the route. These is also 2 previous IED strikes.



AREA SEARCH – PRACTICE 1

Time: 4 x45 Mins Periods

Objective

To practice the participants understanding of the process and mechanics of an area search task.

Guidance

The instructors is to select a number of areas to conduct a search. This will be dependent on the number of teams on the course. In each area the instructor is to conceal a suitably sized item. The teams are to be issued the following scenario:

“Intelligence suggests that the CISC are storing Bomb Making Equipment (BME) near the Amani village. This equipment is being stored in transit to allow it to be later assembled and used against friendly forces. You are to search for the identified area for BME. You will be operating as an independent team as other teams are searching for alternative locations.”

Ground in General



Ground in Detail



AREA SEARCH – TEST 1

Time: 4 x 45 Mins Periods

Objective

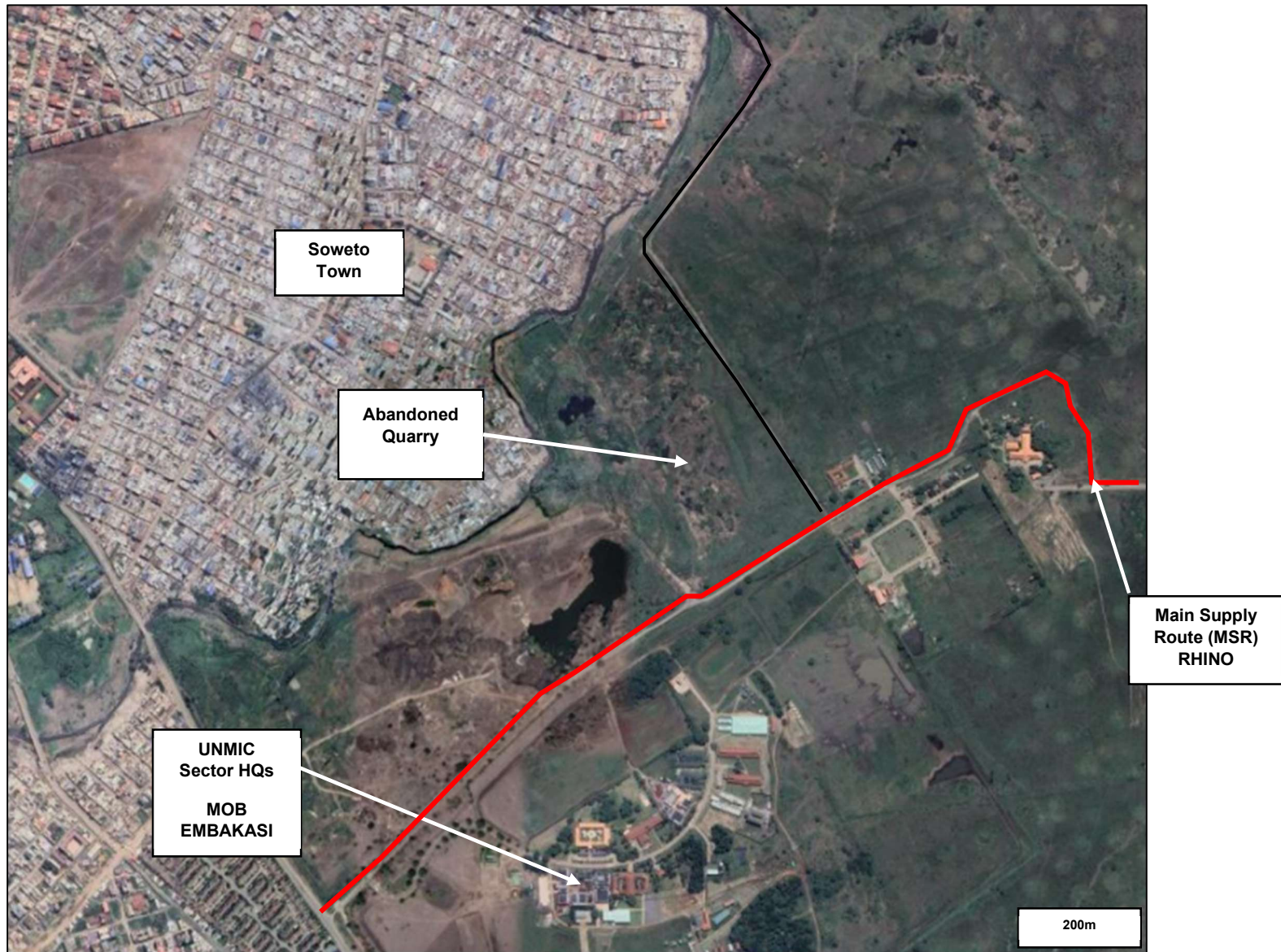
To test the participants understanding of the process and mechanics of an area search task.

Guidance

The instructors is to select a suitable area to conduct a search. This will be dependent on the number of teams on the course. In each area the instructor is to conceal a suitably sized item. The teams are to be issued the following scenario:

“Intelligence suggests that the CISC are storing Bomb Making Equipment (BME) near the Amani village. This equipment is being stored in transit to allow it to be later assembled and used against friendly forces. You are to search the identified area for BME. You will be operating as an independent team as other teams are searching alternative locations”

NB: Instructors are to ensure the Teams conduct test tasks in alternative areas to where they conducted practice.





COMPOUND SEARCH – PRACTICE 1

Time: 4x45 Mins Periods

Objective

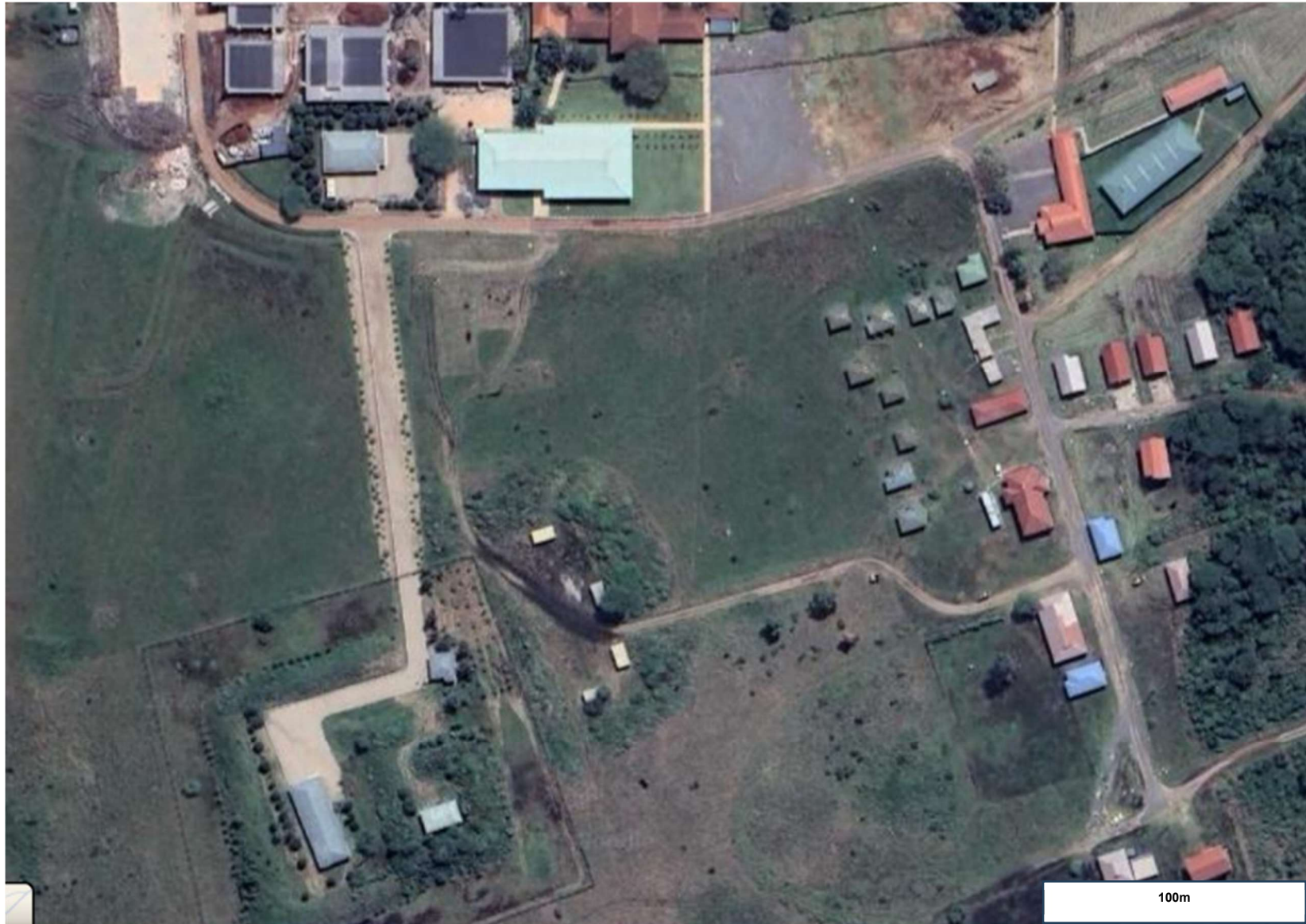
To practice the participants understanding of the process and mechanics of a compound search task.

Guidance

The instructors are to allow the teams to individually conduct a compound search. The teams will each conduct the search in sequence. The teams are to be issued the following scenario:

“Intelligence suggests that the CISC have been using the compound to rest and manufacture IEDs. Friendly forces plan to take over and occupy the compound to deny the CISC use of it. However, it is suspected that the compound may be protected with IEDs. You are to search and clear the compound. You will be operating as an independent team as other teams are searching for alternative locations.”

Ground In General



Ground in Detail





